

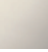





28 528 360



- Brausekopf Ø 55 mm
- Kugelgelenk 25° schwenkbar (in jede Richtung)
- HORIZONTAL RAIN, Durchfluss max. 7 l/min (bei 3 Bar)
- Rosette Ø 55 mm
- Anschluss 1/2"

	Chrom	28 528 360-00
	Platin gebürstet	28 528 360-06
	Platin	28 528 360-08
	Messing (23kt Gold)	28 528 360-09
	Messing gebürstet (23kt Gold)	28 528 360-28
	Dark Platinum gebürstet	28 528 360-99

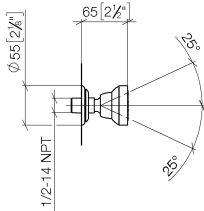
Empfohlenes Zubehör



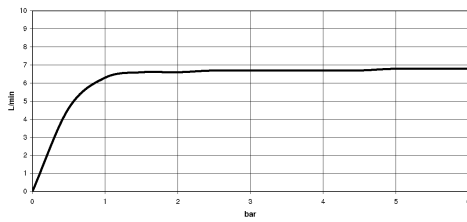
- UP-Wandwinkel -** 35 085 970 90
- Max. Einbautiefe 163 mm
 - Min. Einbautiefe 90 mm

28 528 360

mm [inches]



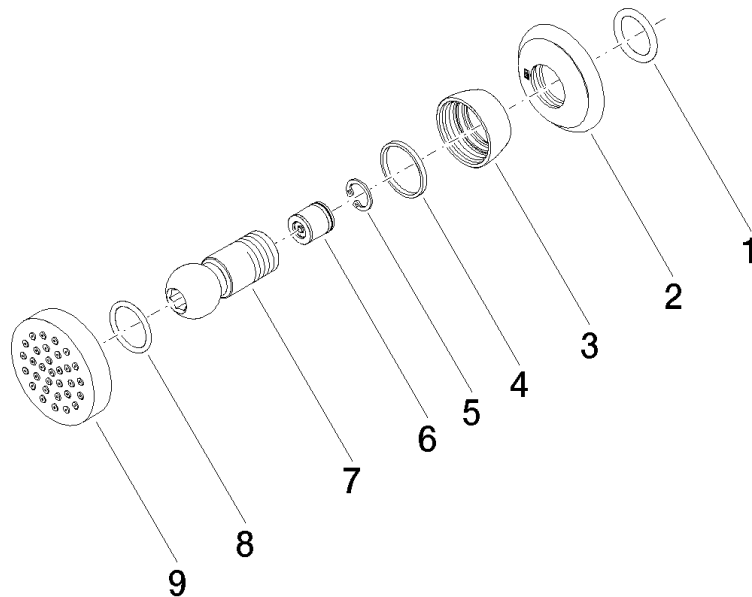
Durchflussdiagramm



Zertifikate

LGA_38652.

28 528 360



Ersatzteilstückliste

Nr.	Artikelnummer	Benennung	Verbaumenge	Lieferzeit
1	90 14 10 026 00 90	Dichtung	1	2
2	09 27 35 003-00	Rosette	1	10
3	09 23 30 027-00	Mutter	1	10
4	09 14 15 010 90	Ring	1	2
5	09 16 01 014 90	Ring	1	2
6	90 23 01 147 00 90	Rueckflussverhinderer	1	2
7	09 21 40 016-00	Anschluss	1	10
8	09 14 10 015 90	Dichtung	1	2
9	90 12 05 027 00-00	Gehaeuse (komplett)	1	10